

**SPEC SHEET
PX02-BAR**

*Interchangeable with
Model TH-2V*

HIGH ACCURACY ELECTRONIC BAROMETER

\$705
Model Shown

PX02 SERIES
0-5 Vdc or 4-20 mA Output
 16 to 32 in-Hg $\bar{\Delta}$ 406 to 813 mm-Hg
 26 to 32 in-Hg $\bar{\Delta}$ 660 to 813 mm-Hg
 28 to 32 in-Hg $\bar{\Delta}$ 711 to 813 mm-Hg

1 bar = 14.5 psi
 1 kg/cm² = 14.22 psi
 1 Atmosphere = 14.7 psi = 29.93 in-Hg = 760.2 mm-Hg = 1.014 bar

- High Accuracy
- Broad Temperature Compensated
-18 to 66°C (0 to 150°F)
- FM and CSA Approved
Intrinsically Safe - Standard
- All Stainless Steel Construction
- Hermetically Sealed for Harsh Environments
- Cable or Connector Models
- Mounting Bracket Option
- Optional Pressure Ports to Fit Most Industrial Applications

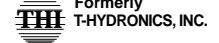


Model PX02K1-26A5T \$705
Shown Actual Size

**For Sales and Service
In U.S.A. and Canada**
1-800-872-3963
1-800-USA-DYNE
 International Customers Dial
(614) 965-9340
 24-Hour FAX (614) 965-9438

OMEGADYNESM FAX
 OMEGADYNE's 24-Hour
 On-Line Publishing Service
1-800-344-3963
1-800-DIG-DYNE
 Document # 3656

OMEGADYNE, Inc.
 149 Stelzer Court, Sunbury, OH 43074
<http://www.omegadyne.com>
 e-mail: info@omegadyne.com



© COPYRIGHT 1996 OMEGADYNE, INC. ALL RIGHTS RESERVED.

► **Most Popular Models Highlighted** ◀ Prices Shown in U.S. Dollars

To Order: (Specify Model Number)				
Models with ⁷U-20 Internal Connection with Bendix Style Connector				
Range in-Hg	mm-Hg	Barometer Model Number	Price	Compatible Meters
0-5 Volt Output				
16-32	406-813	PX02K1-16A5T	\$705	INFP, INFCP, IDP
26-32	660-813	PX02K1-26A5T	705	INFP, INFCP, IDP
28-32	711-813	PX02K1-28A5T	705	INFP, INFCP, IDP
4-20 mA Output				
16-32	406-813	PX02K1-16AI	725	INFP, INFCP, IDP
26-32	660-813	PX02K1-26AI	725	INFP, INFCP, IDP
28-32	711-813	PX02K1-28AI	725	INFP, INFCP, IDP
Option				
Ø-MB0 Mounting Bracket			\$35	

Interchangeable with Model TH-2V and TH-2VA Metric Ranges Available - Consult Engineering
Ordering Examples: 1.) **PX02K1-26AI-MB** is a 26 to 32 in-Hg calibrated electronic barometer with ⁷U-20 internal connection, 4-20mA output, a Bendix connector and the optional mounting bracket, \$725+35 = **\$760**. Mating Connector: (not included) **PT06F-10-6S, \$26.50**.
 2.) **PX02K1-28A5T-MB** is a 28 to 32 in-Hg calibrated electronic barometer with ⁷U-20 internal connection, 0-5Vdc output, and a Bendix connector, \$705+35 = **\$740**. Mating Connector: (not included) **PT06F-10-6S, \$26.50**.

Printed On Recycled Paper

The OMEGADYNE^a PX02 Electronic Barometer is a high accuracy, electronic barometer available in three ranges, 16-32 inHg, 26-32 inHg or 28-32 inHg (absolute pressure) for laboratory or industrial test applications.

They are hermetically sealed with all stainless steel construction which make them ideally suitable for harsh industrial environments. Their high operating temperature, broad compensated range and excellent temperature compensation allow stable readings in applications with fluctuating temperatures commonly found where barometric pressure must be monitored.

SPECIFICATIONS:

0-5V Model:

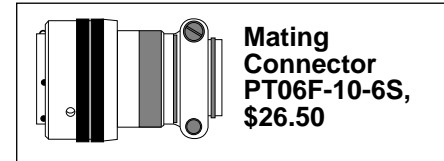
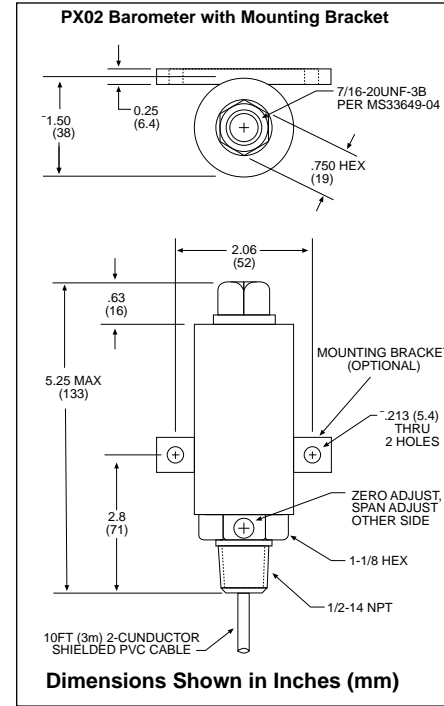
Input, Recommended: 24-32 Vdc
Input, Maximum: 32 Vdc
Output, FSO: 0-5V
Accuracy Class: 0.1%
Linearity: ±0.15% FSO
Hysteresis: ±0.05% FSO
Repeatability: ±0.05% FSO
Zero Balance: 0 ±10% FSO, adj
Thermal Effects: Span: 0.003% Rdg/°F
 Zero: 0.0025% FSO/°F
Agency Approvals: FM/CSA
 Intrinsically safe, IS/I.II.III/1/CDEFG

4-20 mA Model:

Input, Recommended: 12-40 Vdc
Input, Maximum: 40 Vdc
Output, FSO: 4-20 mA
Accuracy Class: ±0.1% FSO, Linearity, Hysteresis, and Repeatability Combined
Zero Balance: 4 mA +10% - 2% FSO adj
Thermal Effects: Span: 0.0045% Rdg/°F
 Zero: 0.005% FSO/°F
Agency Approvals: FM/CSA
 Intrinsically safe IS/I.II.III/1/ABCDEFG

COMMON SPECIFICATIONS:

Operational Temp Range: -47 to +121°C (-50 to +250°F)
Compensated Temp Range: -18 to +66°C (0 to +150°F)
Proof Pressure: 150% of rated pressure
Burst Pressure: 300% of rated pressure
Wetted Parts: 17-4 PH Stainless Steel
Pressure Port: 7/16-20 Internal
 Also Available: 7/16-20 (external)
 1/2-18 NPT (internal or external)
Electrical Connection: PT1H-10-6P or equal. Also available: 10 ft (3 m) 6-conductor cable
Mating Connector: PT06F-10-6S (not included) metric ranges available



CUSTOM CONFIGURATIONS

SERIES PX02 Barometer	PRESSURE PORT [1]	ELECTRICAL CONNECTION [2]	RANGE (in-Hg) [3]	UNITS [4]	OUTPUT [5]	OPTIONS [6]
Models < 10,000 psi C = 1/2-18 NPT-M +\$19 D = 1/2-18 NPT-F no charge J = 7/16-20 UNF-M +\$19 K = 7/16-20 UNF-F no charge			16-32 in-Hg 26-32 in-Hg 28-32 in-Hg	A A A	5T = 0 to 5 Vdc Output \$705 all ranges I = 4 to 20 mA Output \$725 all ranges	-MB = Mounting Bracket \$35

0 = 10 ft (3m) cable (std)
 +\$2/ft over 10 ft
 1 = PT1H-10-6P Connector or equal (no charge)
 Mating Connector (not included) order
PT06F-10-6S, \$26.50
 5 = Lightning protected Amplifier Box (no charge)
 (4-20 mA models only)

- To Order a Custom Configuration:**
1. Select a Pressure Port
 2. Select Electrical Connection
 3. Select a Pressure Range
 4. Select Pressure Units
 5. Select Output
 6. Select Options and Agency Approvals

Interchangeable with Model TH-2V and TH-2VA

Metric Ranges Available - Consult Engineering

Ordering Examples: 1.) **PX02K1-26AI-MB** is a 26 to 32 in-Hg calibrated electronic barometer with 7/16-20 internal connection, 4-20 mA output, a Bendix connector and the optional mounting bracket, \$725+\$35 = **\$760**. Mating Connector (not included) **PT06F-10-6S, \$26.50**. 2.) **PX02K1-28A5T-MB** is a 28 to 32 in-Hg calibrated electronic barometer with 7/16-20 internal connection, 0-5 Vdc output, and a Bendix connector, \$705+\$35 = **\$740**. Mating Connector (not included) **PT06F-10-6S, \$26.50**.

Look for OMEGADYNE Products on the World Wide Web!

http://www.omegadyne.com

e-mail: info@omegadyne.com